

# COMMUTER SURVIVAL GUIDE



## COMMUTER STUDENT ORGANIZATION (CSO)

**About Us:** CSO provides commuter students a safe and inclusive environment where students can engage and connect with each other to foster a deeper sense of belonging and connection to the Loyola community. We offer a variety of programming throughout the semester for commuter students to engage in, make connections, and make the most of their time on campus.

### **Our Team:**

Angelo Velasco – President

Boni Odukoya – Vice President/SGA Representative

Krystel Juarez – Secretary

Michelle Dominguez-Cabrera – Marketing Coordinator

Lilly Braid – Treasurer

TBD – Class of 2028 First-Year Liaison

Katie Derreth – Assistant Director for Student Engagement



Sponsored by

*Commuter Student Organization*



# Table of Contents

<b><i>COMMUTER STUDENT ORGANIZATION (CSO)</i></b> .....	<b>1</b>
<b><i>Loyola Parking</i></b> .....	<b>3</b>
<b><i>Loyola Shuttle Services</i></b> .....	<b>4</b>
<b><i>Navigating Baltimore's Transit</i></b> .....	<b>4</b>
<b><i>Professors at Loyola:</i></b> .....	<b>6</b>
<b><i>Main Campus Buildings</i></b> .....	<b>7</b>
<b><i>Quiet places to study</i></b> .....	<b>10</b>
<b><i>Bookstore</i></b> .....	<b>10</b>
<b><i>Loyola Notre Dame Library</i></b> .....	<b>11</b>
<b><i>East Side of Campus:</i></b> .....	<b>11</b>
<b><i>West Side of Campus</i></b> .....	<b>12</b>
<b><i>Ø Commuter Lounge</i></b> .....	<b>12</b>
<b><i>Hidden Places on Campus</i></b> .....	<b>12</b>
<b><i>Food on Campus</i></b> .....	<b>13</b>
<b><i>Meal Plans</i></b> .....	<b>14</b>
<b><i>Opportunities on Campus</i></b> .....	<b>15</b>
<b><i>Financial Aid</i></b> .....	<b>16</b>
<b><i>Resources for Students:</i></b> .....	<b>17</b>



## Loyola Parking



Commuter students have 3 options to choose from:

1) **Daytime Satellite Parking** at the North Campus (FAC)/Cathedral/5104 York Rd

Price: \$125

Times: 6 am – 10 pm

2) **Convenience Parking** at Newman Towers

Price: \$325 (limited to the first 20 students registered)

3) **Overnight Parking** at 5104 York Rd

Price: \$500.

First year commuter students ARE eligible for parking.

Loyola Parking **Registration:** [Click Here](#)

### Free [Baltimore City](#) parking:

Charles St from 9 am – 4 pm; 6:30 pm – 7 am

E Cold Spring Ln from 8 am – 4 pm

Please be sure to read all parking signs. Otherwise, your car will be fined or towed at your own expense.

### Other:

○ Butler parking lot is free after 4 pm

Handled by Student Administrative Services ([SAS](#))

## Loyola Shuttle Services



Cathedral Express Route Times: 7 am - 7 pm, no service from Cathedral after 7 pm.

Routes Shown by Order of Stops (Listed By Names): [Click Here](#)

New Route Maps (Illustrations): [Click Here](#)

Frequently Asked Questions: [Click Here](#)



Download *TransLoc App* for real-time shuttle tracking.

Housed by Student Administrative Services ([SAS](#))

## Navigating Baltimore's Transit



### Using the “Transit” App:

The Transit app allows users to see scheduled bus times and locations throughout the city and allows users to plan their commutes in real-time. Users can also use it to input addresses and see which commute route and buses, trains, or any public transportation method they could use to get to their destination.

1. Download the “Transit” app on the App Store/Google Play Store.
2. [Apple App Store Link](#) & [Google Play Store Link](#) & [App Site](#)



3. [Watch this short video on how to use the “Transit” app.](#)

## General Bus/Transit Info:

A one-way fare is \$2 (you can use cash and or coins on the bus) and a full day pass/ticket is \$4.60 (also purchasable in the bus). More information regarding fares are on the [MTA Maryland website](#).

You can buy tickets through the [CharmPass app](#) (available on [Apple App Store](#) & [Google Play Store](#)) as well. It'll be the same prices as said above, but you'll have your tickets on you digitally.

## Important Bus Routes Around Loyola:

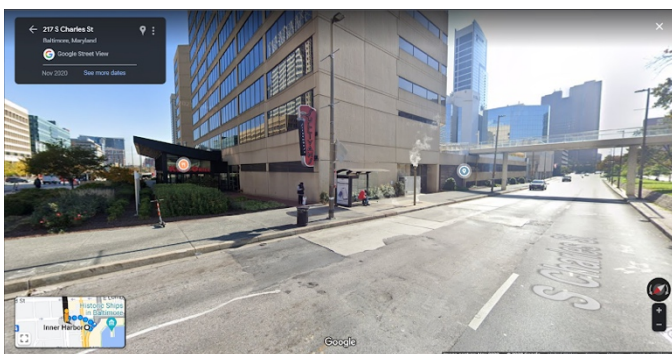
*Loyola to Towson Area & Towson Town Center/Mall*

Take **CityLink Red** Bus to Towson and or Towson Town Center/Mall. The bus stop will be across the McDonalds and on the gas station. [Link to Google Maps location](#). Reference image is also below the first image. To go back to Loyola, take the bus 52 back. [Link to Google Maps location](#). Reference image is also below.



## Loyola to Downtown Harbor

Take bus 51 to the downtown harbor. The bus stop will be across the Loyola sign near the Bridge, across the intersection. [Link to Google Maps location](#). Reference image is also below. To go from the downtown harbor back to Loyola, you'd take the 51 just going back the other direction. [Link to Google Maps location](#). Reference image is below.



## Loyola to any location

You could also use the transit app for more specific routes. Just add in the address of your destination and it will show potential commute routes you could take.

## Welcome to Campus!



25<sup>th</sup> President:  
President Terrence M. Sawyer, J.D.

**Professors at Loyola:**

[Click Here](#)

**Department Chairs:** [Click Here](#)

## Academic Buildings



## Main Campus Buildings

For a complete and printable version of Loyola campus' map, [click here](#)

***Humanities Center*** (B + 3 floors):

Departments: *History, English*

1st floor: [Counseling Center](#) (150), [Admissions, Undergraduate](#), [CCSJ](#) (suite 142), [Hug Lounge](#)

2nd floor: [Office of Financial Aid](#) (211A)

***Jenkins Hall*** (3 floors):

1st floor: [Office of Academic Affairs](#)

2nd floor: [Student Development](#)

3rd floor: [The Study](#)



**Beatty Hall** (Connected to Fernandez Center, 2 floors):

Departments: *Education, Psychology, Sociology*



**Fernandez Center** (Newest Building, B + 3 floors):

Departments: *Psychology, Speech-Language-Hearing Sciences*

1<sup>st</sup> floor: [Rizzo Career Center](#), [Green and Grey Café](#)



**Donnelly Science** (Connected to Knott Hall, B + 3 floors):

Departments: *Biology, Computer Science, Engineer Science*



**Knott Hall** (Next to the Bridge, B + G + 3 floors):

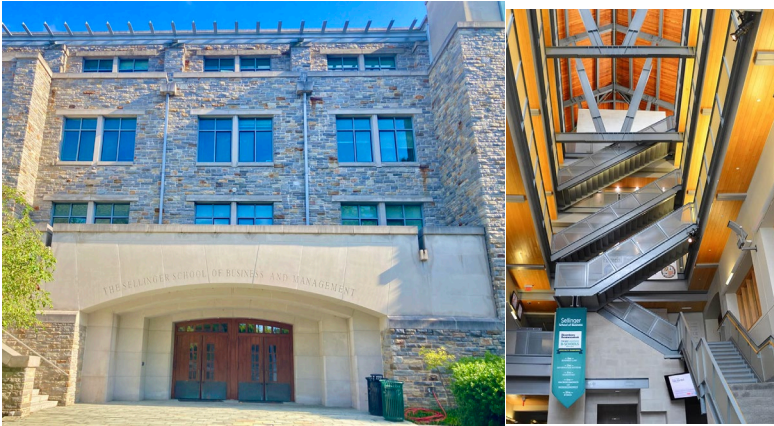
Departments: *Mathematics and Statistics, Physics*

1<sup>st</sup> floor: [ODTL](#) (102)



***Sellinger School of Business*** (B + G + 3 floors):

Departments: *Accounting; Economics; Finance; Marketing, Law, and Social Responsibility; Management and International Business; Information System and Operation Management*



***Maryland Hall*** (Connected to Sellinger, B + 4 floors):

Basement: [The Writing Center](#) (057), [Writing Department Faculty](#) (043)

1<sup>st</sup> floor: [AASC](#) (138), [Records Office](#) (141), [SAS](#) aka [Financial Services](#) (140), [Office of Dean of Undergrad Studies](#) (145)

***Baltimore College Center*** (B + 3 floors):

MacManus Theater, Photography & art classrooms.



***Andrew White Student Center*** (Student Center, B + 4 floors):

1<sup>st</sup> floor: [Starbucks](#), [Boulder](#)

2<sup>nd</sup> floor: [Boulder 2.0](#), [Reitz Arena](#), & McGuire Hall

3<sup>rd</sup> floor: [Alana Services](#) (counts with microwave & fridge), [Student Engagement](#) (E311 & E413) & Lockers (limited spots, bring your own lock)

4<sup>th</sup> floor: Programming room & Office of Student Engagement



## **BONUS:**

### **Quiet places to study**

Update -- **Fernandez Center, at the library**



**Bookstore: <https://loyola.bncollege.com/>**



# Loyola Notre Dame Library

Website: <https://www.lndl.org/>

Address: 200 Winston Ave. Baltimore, MD 21212

Phone Number: (410) 617-6801

Directions & Parking Information [Click Here](#)



## East Side of Campus:

- [Fava Chapel](#) is located at Hammerman House
- [Hillside](#) (Residence Halls): Hammerman & Butler
- [Eastside](#) (Residence Halls): Ahern, Aquinas, McAuley, & Rahner Village
- [ROTC](#) is located at 300 Radnor &

## Early House



## West Side of Campus:

- [Newman](#)
- [Gardens:](#) Avila, Bellarmine, Claver, & Dorothy Day Hall
- [Campion](#)
- [Charleston:](#) Seton, Southwell, Hopkins, & Lange
- [The Social](#)
- **Commuter Lounge** is located on the 1<sup>st</sup> floor of Avila Hall aka Gardens A

Don't forget to bring your Loyola ID!

- [DSS](#) office is in Newman Tower (107)



## Hidden Places on Campus

**Notre Dame/Loyola Library** - In the back of the 3rd floor, there are rooms where you may walk in with no need to require permission or reserve the room. The rooms provide quality sound control features while also being great areas to get work done with others in a group setting.

**The Study** - On the top floor of Jenkins Hall resides a location named “The Study.” It provides a place to get work done in a scenic, aesthetic, and traditional setting. The views from this level of the building combined with the vibes of the early history of the University offer a unique experience while settling in to study.

**Fernandez Center** - In the campus's newest building, a basement was installed. Down there lie rooms to study and collaborate with others while giving off a maze type feel as the ceilings are low, and turns are plentiful. A kitchenette is present, allowing food to be stored and to also be heated up. A cool spot to check out if exploring and studying are things you may find yourself wanting to do.

## Food on Campus

- [Starbucks](#)
- [Ace Sushi](#)
- [Green Peel](#)
- [Boulder](#)
- [Boulder 2.0](#)
- [Green & Grey Café](#)
- [Midnight Breakfast](#)

## Microwave & Fridge on Campus

- Fernandez Basement
- Alana (3<sup>rd</sup> floor of student center)
- Student Center Basement

## Recommended Food Areas

### Areas

- [Towson Area](#)
- near J. Hopkins Campus
- Green Spring Tower Square
- The Rotunda

### Restaurants

- [Miss Shirley's Cafe](#)
- [R. House](#)
- [The PaperMoon Diner](#)
- [The Local Fry](#)
- Papi's Cuisine
- [Café Los Sueños](#)

## Meal Plans

- Commuters are not required to have a meal plan but have the option to [choose a meal plan](#).
  - To add a meal plan email [sas@loyola.edu](mailto:sas@loyola.edu): name, ID number, and meal plan choice.
- Commuters can also add money into their Evergreen Card and use money (\$) for meal points.
  - To add money to the Evergreen Card, it can be accessed through Inside Loyola

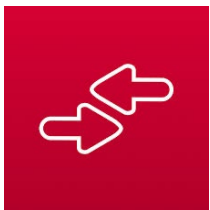
Download on Appstore or Google Pay:



**GrubHub:** Skip the line and order ahead to pick up on campus! Find it in the App Store or Google Play. Go to settings, select "Campus Dining," and select Loyola University.



**FoodU:** FoodU helps you find dining locations, hours, menus, specials, and more! Visit the App Store or Google Play and search "FoodU."



**Transact E-accounts:** Use this app to check your meal plan balances and transactions.

[FAQs](#)

## Opportunities on Campus

There are numerous opportunities on campus to advance your education and career. In terms of your education, there are scholarships, grants, work study and student programs. In terms of your career, there are sponsorships, mentorships, and internships. Meanwhile, fellowships and [study abroad](#) allow you to do both.

- [Mentorship](#)
- [Student Jobs](#)
- [Work Study](#)

### Make Connections

- [Career Center](#)
- [Handshake](#)
- [Loyola Connect](#)
- [LinkedIn](#)

### Sponsorship Program

### Writing Workshops

- [The Writing Center](#)

### [Work Study](#)

### [Clubs and Organizations](#)

### [Explore Baltimore](#)

## Financial Aid

- **Book Scholarship:** Loyola can provide textbook support for students who are Pell Grant eligible, close to Pell Grant eligible, and/or are experiencing extenuating circumstances. Any financial support for textbooks must be provided in conjunction with financial aid and in compliance with federal regulations. Financial support that exceeds the estimated total cost of attendance for each student cannot be provided. To access the request form, click [here](#). Questions? Please contact Cynthia Terry (cterry1@loyola.edu), Case Manager
- [Scholarships](#)
- [Grants](#)
- [Loans](#)
- [Federal Work Study](#)

### FAFSA (<https://studentaid.gov/>)

Loyola University's FAFSA Code Number is **002078**.

The deadline to complete the FAFSA is **April 1**. (Maryland Residents must file the FAFSA by March 1 for consideration of Maryland State grant assistance).

Apply for Financial Aid: <https://www.loyola.edu/departments/financial-aid/undergraduate>

Financial Aid FAQs (<https://www.loyola.edu/departments/financial-aid/undergraduate/faqs>)

Resources: <https://www.loyola.edu/departments/financial-aid/undergraduate/resources>

Financial Aid Self-Service Portal: [Website Login](#)

Contact the Financial Aid Office: <https://www.loyola.edu/departments/financial-aid/contact>

Located at the Humanities Center, 211A



## Resources for Students:

### Academics:

- [Inside Loyola](#)
- [Loyola's Academic Year Calendar](#)
- [Majors & Minors](#)
- [Printing](#)
- [Core Curriculum](#)
- [What Can I Do With A Major In...?](#)
- [Grading Standards](#)
- [Student Exam Schedule](#)
- [Student Forms](#)
- [Academic Advising - For Students](#)
- [Opportunity Act Disclosures](#)
- [Study Abroad](#)
- [Student Employment Program](#)
- Request a Tutor: [TutorTrac](#)
- [The Bridge](#)

### Health:

- [FAC \(Fitness & Aquatic Center\)](#)
- [COVID Updates](#)
- [Athletics](#)
- [Health Insurance Information](#)

### Safety:

- [Useful Contact Information](#)
- [Loyola News](#)
- [Public Safety](#)
- [Safety Tips](#)
- [Emergency Preparedness](#)

- Sign up for [Greyhound Alerts](#)
- Campus Police: 410 – 617 – 5911

For Commuters:

- [Commuter Resources at Loyola](#)
- Comment or suggestion about [parking & transportation](#)
- [DoubleMAP](#)
- [CSO website](#) in the Bridge

Thank you!